

Carolynne House



RUNWOOD
HOMES

SCAN HERE



Care Home in Thurrock



Dementia Care | Nursing Care | Respite Care

Situated in Thurrock, Essex, Carolynne House is a 53-bed care home offering residential, dementia, and respite care, with a strong focus on person-led care. Our home provides a welcoming and vibrant community where residents can thrive, featuring comfortable bedrooms, spacious living areas, and dedicated facilities. Residents enjoy a safe and engaging environment, with activities that promote wellbeing and connection to the local community.

At Carolynne House, we understand every resident is unique. Our wellbeing programme is tailored to individual interests, helping residents stay active, confident, and socially connected through outings, community events, walking groups, and a wide range of in-home activities.

What we offer:



Garden seating areas



Hair & Beauty Salon



Cinema Room



Café & Restaurant



Vibrant programme of social activities



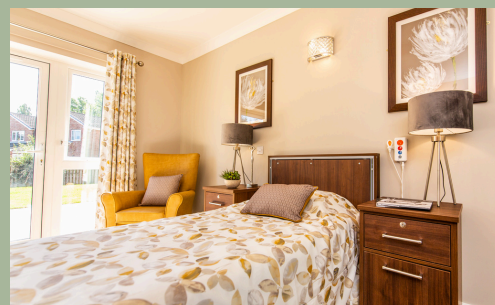
TV in each room



Minibus



Unlimited Wifi



Life at Carolynne House

Since my aunt moved into Carolynne House, she has been treated with such kindness that our words cannot express. All of the staff are lovely. They always ask if she would like to go or do anything special, then try to arrange it. Nothing is too much trouble and we can't thank them enough.

- Niece of a resident

Contact us: **01375 531547**

www.runwoodhomes.co.uk

WATERSON ROAD, CHADWELL-ST-MARY, GRAYS,
THURROCK, ESSEX, RM16 4LD



**RUNWOOD
HOMES**

Carolynne House

Our Care Services In Thurrock

Dementia

For those living with dementia, our care home is equipped with appropriate facilities and highly trained staff to provide excellent support and care tailored to each individual's needs.

Nursing

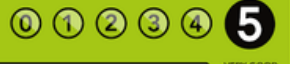
Nursing care at our care home supports residents to live as independently as possible, with 24-hour support from a qualified nursing team. Personalised care is always on hand, ensuring comfort, dignity, and wellbeing.

Respite

Short-term support is available for those who need assistance while their primary caregivers take a break. Our care home provides professional 24-hour care in a safe, nurturing environment, allowing loved ones to rest and recharge.



FOOD HYGIENE RATING



VERY GOOD

Activities

We recognise each resident is unique, with a wellbeing programme tailored to individual interests—supporting activity, confidence, and social connection through trips to local attractions, community events, walking groups, and daily activities within the home.

Minibus

We are pleased to provide a dedicated minibus service available at each home. This regular service enables safe, supported trips, community activities, and enjoyable days out, helping residents stay connected, maintain their independence, and experience meaningful moments beyond their everyday surroundings.

Food

We follow guidance from the British Dietetic Association and the Care Home Digest to support residents' nutritional needs. Freshly prepared meals cater to a range of dietary requirements and preferences, creating an enjoyable, social, and dignified dining experience.

Contact us: **01375 531547**

www.runwoodhomes.co.uk

WATERSON ROAD, CHADWELL-ST-MARY, GRAYS,
THURROCK, ESSEX, RM16 4LD

